

PRODUCTION AND ASSEMBLY OF STEEL STRUCTURES AND HALLS



We draw from the experience acquired during realization of more than 1000 of complete construction works

Logistics centers

Halls with the administration

Production halls

Sports halls

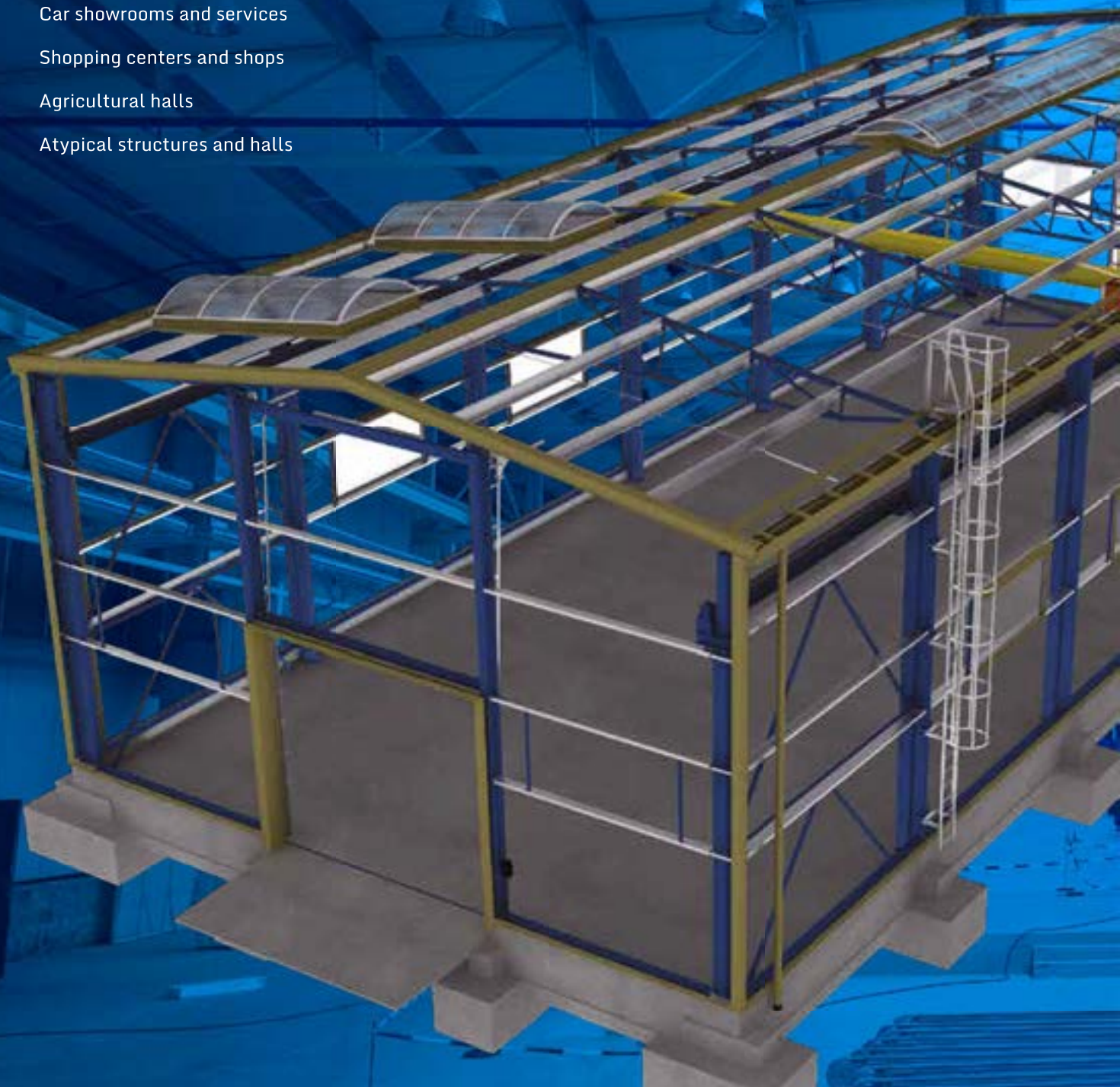
Storage halls

Car showrooms and services

Shopping centers and shops

Agricultural halls

Atypical structures and halls



Why choose FEMONT OPAVA's halls?

We have been manufacturing and delivering steel prefabricated halls for more than 20 years. We always try to find an optimal functional and architectural solution for the creation of the unique work.

We mainly produce prefabricated halls with application in many sectors.

FEMONT OPAVA is focusing on production and assembly of industrial halls, supermarkets, car showrooms, fuel filling stations, installation of panel cladding and combined cladding of industrial facilities, including skylights, windows, gateways, etc.

Thanks to the flexible structural design solutions, our prefabricated halls can be used in a number of branches starting from industry, agriculture up to warehousing, sports or development of municipal infrastructure.

Besides assembled halls we also implement nonstandard constructions for which we can utilize the advantages of VEDE systems, such as connection to existing structures, expanding structures, adjacent structures, roof structures, shelters, access floors, piping bridges or other technical bridges.

We will be glad to develop the design based on your requirements. We guarantee quick and trouble-free construction, including a possible annexed building and a building-in without big and demanding structural interventions to the existing building.



Logistics centers



Logistics centers meet the demanding requirements for high-volume storage, extensive handling and dispatch of goods to the customer. With respect to requirements for storage of the greatest quantity of material and clarity and safety at its handling, high demands are put on the free internal layout without internal separating and supporting structures.

Various modern technologies and fulfillments of prefabricated structures may be combined according to the customer's individual requirements.

Our solution can be link the modern architectural appearance of the center with its functionality.

The purpose of logistics centers is to contain the greatest quantity of stored goods; that's why these objects are usually very extensive both by their area and high.

Šmídl s.r.o.

Logistics center
Vysoké Mýto

Time of realization:

3 months

Built-up area:

6000 m²



TQM - holding s.r.o.

Logistics center
Opava

Time of realization:
8 months

Built-up area:
13000 m²



Jednota Opava,
consumer cooperative

Wholesale store
Hlučín

Time of realization:
3 months

Built-up area:
3744 m²



TQM - holding s.r.o.

New-building of service center
Opava

Time of realization:
2 months

Built-up area:
1500 m²



Halls with the administration

At the present time, storage, production or dispatching premises complemented by administrative facilities of the company are very widespread direction in the construction of prefabricated steel halls.

Combining the utility and industrial area with the administrative premises, we are able to offer to a client a representative residence of his company. The administrative part can be divided into several counter levels in accordance with wishes of the client. According to the variability of the steel structure, its connection to the industrial sector can be reached without restrictions. Thanks to these factors, we are able to satisfy even the most demanding client's requirements and always create an individual and a unique construction.



The administrative areas are often subject to the greatest demands, for example, for the disposition of premises, lighting by the natural light, its acoustic parameters and many others. To meet these demands, we use in full measure the possibility of wall and roof systems. These systems provide us a large range of shades of color solution for outside and inside surfaces. At the same time, they allow to reach a significant variability of location of opening fillers, roof lights, ventilating penetrations, etc.



Prodan Interior s.r.o.

Production building with the administration part
Ivanka pri Dunaji, Slovak Republic

Time of realization:
3 months

Built-up area:
1560 m²



CARMAN, a.s.

Production building with the administration part
Ostrava-Poruba



AUTOBOND GROUP a.s.

Time of realization:
4 months

Construction of the car service
with the administrative part
Ostrava-Hrabová

Built-up area:
1428 m²



TRANSKOL s.r.o.

Time of realization:
5 months

Storage hall with the administrative part
Moravany u Brna

Built-up area:
864 m²



quick mix SK s.r.o.

Time of realization:
5 months

Production area
with the administrative premises
Veľký Meder, Slovak Republic

Built-up area:
720 m²



Time of realization:
3 months

Built-up area:
4642 m²

Production halls

Industrial premises together with storage halls fall into our most common type of prefabricated buildings.

Normally, production halls, due to the constant movement of workers, are designed with roof and wall thermal insulation systems. A big emphasis is put on lighting by the natural light. Mostly, the passing the natural light through the roof cladding in these production areas is ensured by roof straps or – in the last row – with the help of local lighting. Concerning wall cladding, these spaces can be further made lighter by means of light belts and window elements.



For purposes of production halls, in which handling with heavy loads is considered, interior premises can be equipped with overhead cranes. We are able to design the steel structure for the overhead crane with a maximum optimization, to satisfy the needs of our client.

Commonly we realize production halls suitable for cranes with the capacity from 5 000 kg up to 32 000 kg.

voestalpine PROFILFORM s.r.o.

Production building
with the administrative premises
Vyškov

Time of realization:
3 months

Built-up area:
1727 m²



TRIGA - MF spol. s r.o.

Production area
Lomnice nad Popelkou

Time of realization:
12 months

Built-up area:
1644 m²





MASSAG, a.s.

Revitalization of the production area
Fulnek

Time of realization:
4 months

Built-up area:
4300 m²



ARMATURY Group a.s.

Construction and innovation
of the production plant
Dolní Benešov

Time of realization:
3 months

Built-up area:
8100 m²

Ing. Alexander Pivovarník INGMETAL

Production building of polystyrene molds
Prešov, Slovak Republic

Time of realization:
4 months

Built-up area:
750 m²



PV-Czech, s.r.o.

Finishing of construction of the area of the manufacturer
of steel structures, boilers, bodies and containers
Frýdlant nad Ostravicí

Time of realization:
4 months

Built-up area:
4250 m²

Sports halls



Sports halls are atypical and different constructions compared to conventional steel prefabricated halls. Due to the placement of the tennis and badminton courts and other sports surfaces, these halls put emphasis on the largest inner span with a maximum height. This is always with absolutely free inner disposition without any internal separating and supporting systems. Here, we combine various types of steel structures from the lattice ones used, for example, for winter stadiums, to the frame ones, which are mainly used for sports halls focusing on ball games. Frame structures which are usually made according to individual parameters and requirements can be performed as lattice or solid ones.

The sports halls are made from light steel profiles with an emphasis on maximum quality of surface treatment of separate steel elements, ensuring the most pleasant appearance of the final building.

Commonly these sports premises, due to the constant movement of the sportsmen, tend to be designed from the roof and wall systems with thermal insulation, ensuring such a comfortable interior environment of the hall. From a structural point of view, these structures can be combined with social background, providing all modern services to satisfy even the most demanding clients.



City of Opava

Multipurpose sports hall
Opava

Facilities total area:
69810 m²

Number of seats
in the amphitheater:
2898





JC Market s.r.o.

Tennis and badminton area
Opava

Time of realization:
2 months

Built-up area:
495 m²



Prestige tennis park, s.r.o.

Tennis sports hall
Frýdek-Místek

Time of realization:
3 months

Built-up area:
1970 m²



City of Bohumín

Sports hall
Bohumín

Time of realization:
6 months

Built-up area:
2985 m²

Storage halls

Our company has been designing and assembling storage industrial halls for more than 20 year.

They are one of our most frequent types in the construction of prefabricated buildings. For the purposes of storage, we combine various types of steel structures from the lattice to the frame ones with free internal disposition which ensures optimal location of storage racks and systems.

Usually we produce the halls with a span of up to 30 m, but concerning the client's requirements we are able to design and supply the halls with a wider span.



We use cladding systems with thermal insulation and light systems without thermal insulation, where the cladding consists of trapezoidal lacquered steel plates. In both types of insulation, we offer a range of related components, such as the roof lighting and wall shell, installation of the ventilation systems, as well as doors and gateway systems. At production of steel prefabricated storage halls, we combine the latest construction design and architectural appearance, but never forget the practical and functional side of the whole work.

For the purposes of storage halls such as handling of heavy loads and high-bulking objects, internal premises can be equipped with overhead cranes. We are able to propose the client the structural steelwork for the overhead crane with a maximum optimization. Commonly we build production halls on the loading capacity of cranes from 5 000 kg up to 32 000 kg.

AGROP NOVA a.s.

Storage hall for multilayer panels
Ptenický Dvorek – Ptení

Time of realization:

3 months

Built-up area:

3520 m²



Slévárna Dolní Benešov, s.r.o.

Storage hall
Dolní Benešov

Time of realization:

3 months

Built-up area:

897 m²





Albrechtice Town

Compost plant
Albrechtice Town

Time of realization:
3 months

Built-up area:
194 m²



Styrotrade, a.s.

Construction of the company area
Rýmařov

Time of realization:
7 months

Built-up area:
15200 m²



KARETA s.r.o.

Central collecting yard
Rapotín

Time of realization:
5 months

Built-up area:
1200 m²



KLIMA solution s.r.o.

Storage hall
Krásno nad Bečvou

Time of realization:
3 months

Built-up area:
450 m²



Car showrooms and services

Car showrooms and service workshops are a unique and different construction compared to a classic warehouses and production halls. Due to the requirements of owners on handling and car showing, each such building is very demanding on a free internal layout without internal separating and supporting structures. Great emphasis, particularly in the showroom premises, is placed on the entire interior appearance. It is demanding especially on the accuracy of the details and the overall aesthetic fulfillment that is a subject to the strict criteria of the individual car brands. The general airy impression is created by glass facades that fill the internal spaces with natural light. Because of these several various requirements and modern trends, a steel structure is the most ideal possibility for the car showrooms' and services' objects that ensures the maximum adaptation of the whole structure.



As much as nowadays great demands are placed on a modern car design, the same demands are placed on a modern appearance of individual car showrooms and service workshops. That's why steel structures and particular steel elements for these areas are constantly evolving. Steel structures are made of light steel profiles with an emphasis put on maximum quality of surface finish treatment of individual steel elements, ensuring so a highly aesthetic appearance of the final work.

For the purposes of services, especially premises for truck service, the service areas may be equipped with overhead cranes. For these purposes, bridge cranes with load capacities from 3 200 kg to 5 000 kg are usually used.

AUTO Heller s.r.o.

New construction of AUDI car showroom
Ostrava

Time of realization:
3 months

Built-up area:
640 m²



AUTO STYL a.s.

ŠKODA Car showroom
Praha

Time of realization:
3 months

Built-up area:
550 m²





TRUCK TRADE spol. s r. o.
 DAF Sale and service center
 Paskov

Time of realization:
4 months

Built-up area:
1635 m²

AUTOCENTRUM LUKÁŠ
 ŠKODA Car showroom and service
 Nový Jičín

Time of realization:
2 months

Built-up area:
1007 m²



RAMACH-AUTO s.r.o.
 RENAULT Car showroom and service
 Svitavy

Time of realization:
2 months

Built-up area:
870 m²



LeasePlan Česká republika, s.r.o.
 CarNext
 Vestec

Time of realization:
3 months

Built-up area:
1000 m²



Shopping centers and shops

Purchase and sales centers fall similarly as car showrooms to the group of buildings with high demands on the complete appearance of the structures, designing of details and a performance of surface treatment.

These are the premises where the potential client has to feel comfortable, and which must have a representative impression. For the creation of unique works, concerning these projects, our company uses its years of experience. Similar to car showrooms and administrative centers, these shopping centers are often demanding on maximum lighting with natural light and a free space layout. For these purposes, we combine the appropriate design solution with the various elements of the wall and roof systems, which help us to fulfill these requirements.



Sedláček s.r.o.

KÄRCHER Cleaning Equipment shop
Kolín

Time of realization:
2 months

Built-up area:
355 m²



NOVUS BIKE s.r.o.

SUNDANCE shop
Opava

Time of realization:
2 months

Built-up area:
935 m²



WERCO Kolín s.r.o.

Shopping center
Kolín

Time of realization:

2 months

Built-up area:

948 m²



Kaufland Česká republika v.o.s.

Shopping center
Praha-Jarov

Time of realization:

5 months



Agricultural halls

They are similar to the classic assembled halls. They differ a lot by its conception from the halls such as car showrooms, shops and administrative premises. For the purposes of agricultural objects, we combine various types of steel structures from the lattice to the frame ones, always with free internal layout for maximum economic use of built-up areas.

Agricultural objects are specific, especially due to their strict standards concerning the storage of different feed and materials, up to the standards determined the requirements for animal husbandry.



Roof and wall systems for agricultural purposes, the same as roof and wall systems used in storage halls, offer a wide range of options.

From the thermal insulation system to light systems without thermal insulation that are made of lacquered trapezoidal sheet metal only. Starting with the halls for feed and grains stocking up to halls for animal husbandry, here is placed a great emphasis on the ventilation of these utility spaces by which a perfect hygienic conditions and ideal circulation of fresh air are secured.

Agrozdroj s.r.o.

Agricultural storage hall
Stráže nad Myjavou – Šaštín, Slovak Republic



ZEMĚDĚLSKÁ a.s. Opava-Kylešovice

Agricultural hall for grains storage
Opava-Kylešovice

Time of realization:
6 months

Built-up area:
1000 m²



Time of realization:
2 months

Built-up area:
1875 m²



Farma Vlčeves

Agricultural hall for feedstuff
Tábor

Time of realization:
2 months

Built-up area:
1650 m²



FRANČÁK s.r.o.

Sheltered dung-yard and reconstruction of the haylage trough
Farm Guntramovice

Time of realization:
7 months

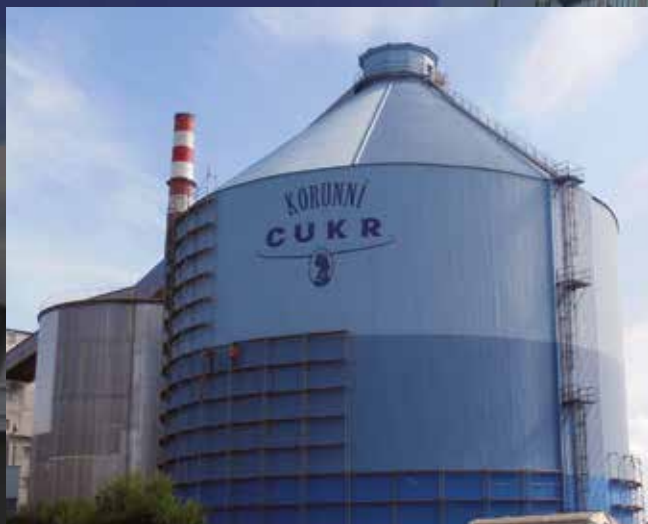
Built-up area:
1632 m²

Atypical structures and halls

These atypical structures and halls can be used in the field of sport, agriculture, industry and construction of infrastructure. As finished works we can find in these individual sectors works such as steel walkways and bridges for the hiking and cycling trails, sports bleachers for stadiums, industrial power cable routes, roofing of the bus stops, or a variety of atypical halls using the wall and roof cladding system.

This sector of our production of atypical halls finds its use mainly among industrial and technological structures.

We always try to create unique and architecturally modern work of high quality with the use of new technologies and procedures.



METRO Group Properties SR. s.r.o.

Fuel filling station
Bratislava, Slovak Republic

Time of realization:
1 month

Built-up area:
882 m²



BRANO a.s.

Reconstruction of the existing shelter
Branka u Opavy

Time of realization:
1 month

Built-up area:
288 m²



City of Náchod

Náchod's bus terminal
Bus arrival and departure places

Time of realization:
2 months

Built-up area:
1236 m²





Coal Mill a.s.

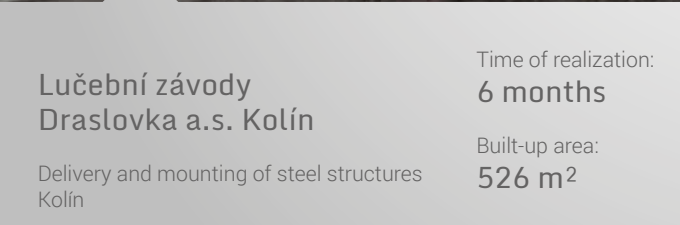
Coal grinding plant
Dětmarovice

Time of realization:

1 month

Built-up area:

352 m²



Lučební závody Draslovka a.s. Kolín

Delivery and mounting of steel structures
Kolín

Time of realization:

6 months

Built-up area:

526 m²



Dalkia Česká republika, a.s.

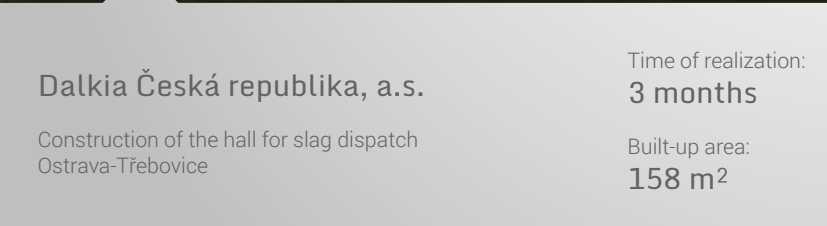
Container hall
Ostrava-Třebovice

Time of realization:

2 months

Built-up area:

169 m²



Dalkia Česká republika, a.s.

Construction of the hall for slag dispatch
Ostrava-Třebovice

Time of realization:

3 months

Built-up area:

158 m²



Production and services

Our company owns production facilities consisting of the preparation section, processing section and production of steel structures, as well as the paint shop section and the material warehouse, and also the tinsmith components preparation section and the finished structures dispatching section. All of these production sections are integrated into a single production hall with a total flooring of 6 000 m². Our production section is equipped with 8 bridge cranes with maximum loading capacity of 8 000 kg that are evenly placed along the entire area of the production hall. The final configuration of the production plant was completed in 2006.



Grit blasting of steel



Tinsmith components production



Shape cutting



Welding of sections

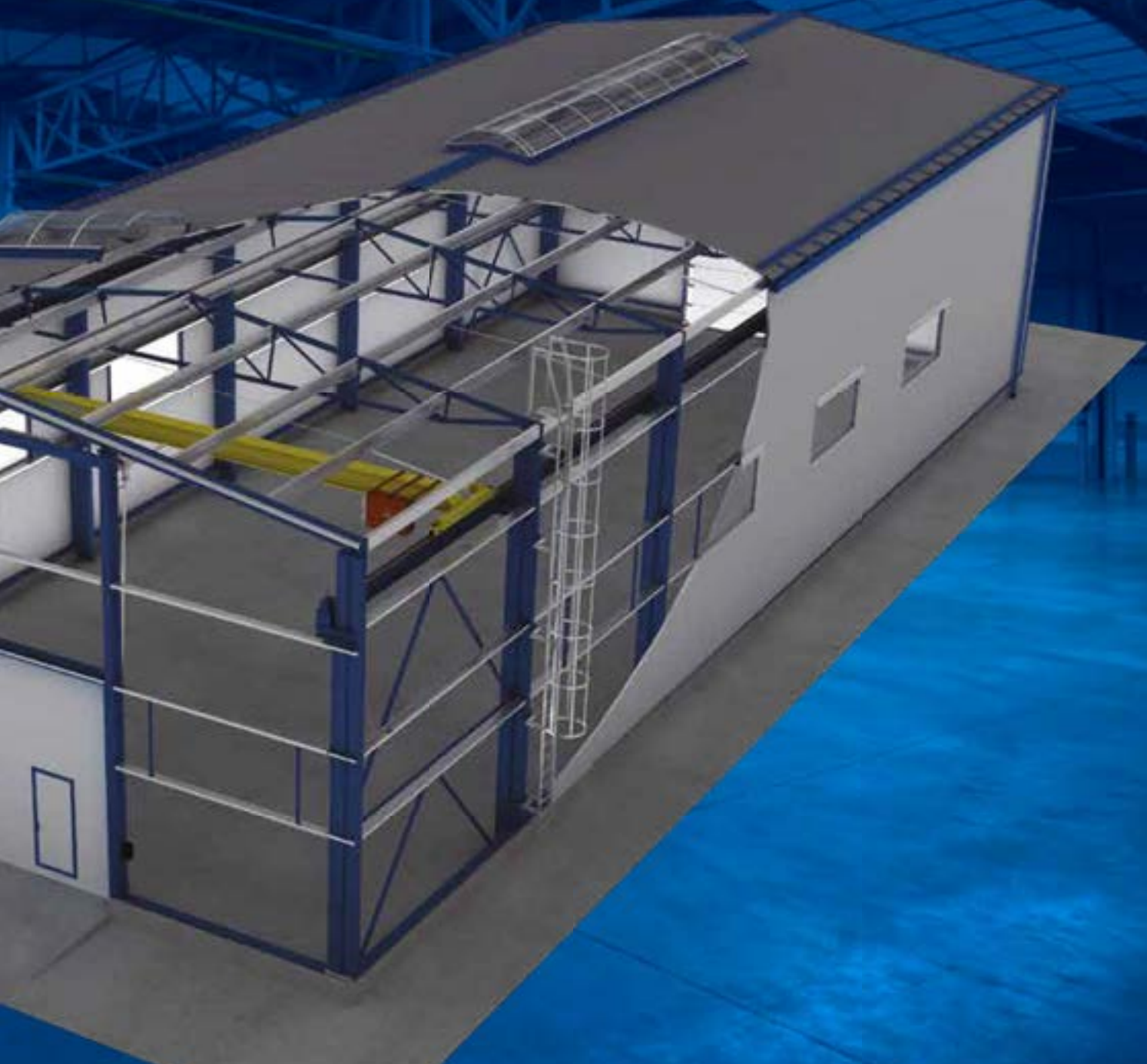
We ensure the highest possible level of quality of the supplied structures to our clients.

For these purposes we are equipped with:

- Own welding lines
- Own flame cutting automatic machine
- CNC machines for bending and shaping of tinsmith elements
- Grit blasting machine

The total annual production
of the company is on average
3 000 tons of steel structures.

We hold a certificate for fabrication of steel structures
according to ČSN EN 1090-2 class EXC3.





FEMONT OPAVA s.r.o.

Vávrovická 274/90

747 73 Opava – Vávrovice

telefon: (+420) 553 793 181

fax: (+420) 553 793 068

e-mail: femont@femont.cz

www.femont.cz

